



**HAMMONDS PLAINS
HISTORICAL SOCIETY**

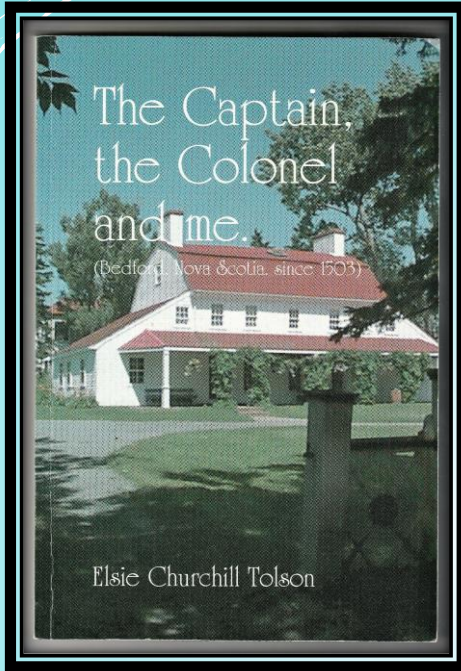
**Our Home
Since 1786**



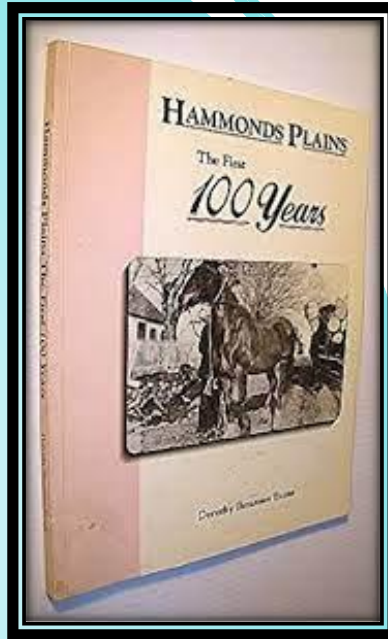
www.HammondsPlainsHistoricalSociety.ca

BONDING WITH THE BASIN

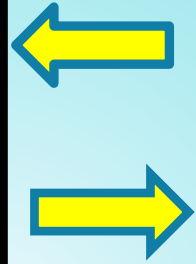
**OUR HISTORIC BEDFORD –
HAMMONDS PLAINS
HISTORIC CONNECTIONS**



Bedford



Hammonds Plains



SETTING THE CONTEXT

EXPLORING THE NOTEWORTHY CONNECTIONS BETWEEN THE COMMUNITIES OVER THE YEARS – THIS IS NOT A HISTORY OF BOTH COMMUNITIES

Beginnings

TIMES OF NOMADIC LIFE

FOR CENTURIES, THE MI' KMAQ
FIRST NATION PEOPLES FREELY
ROAMED THE LANDS BETWEEN
POCKWOCK LAKE AND BEDFORD
BASIN



TIMES OF NOMADIC LIFE

THE MI' KMAQ SPENT THE WINTER SEASON INLAND (SMALL BANDS EXISTED AROUND POCKWOCK LAKE AND BIG INDIAN LAKES) AND TRAVELLED TO THE SHORES OF BEDFORD BASIN DURING THE SUMMER SEASON.



This Photo by Unknown Author is licensed under [CC BY](#)

CONTACT WITH EUROPEANS

AT SOME POINT DURING THE 15, 16 OR 1700'S CONTACT IS MADE WITH EUROPEAN FISHERS, LIKELY AT BEDFORD BASIN



DISEASE HITS

THE MI'KMAQ ARE EXPOSED TO EUROPEAN DISEASES AND DEPOPULATION RESULTS.



1700'S - THE EUROPEAN FIGHT FOR CONTROL OF NS

FRANCE AND ENGLAND
FOUGHT FOR CONTROL
OVER NORTH AMERICA
LEADING TO THE TREATY OF
UTRECHT IN 1713 –
ENGLAND CONTROLS
MAINLAND NOVA SCOTIA /
FRANCE CONTROLS CAPE
BRETON



1700'S - THE EUROPEAN FIGHT FOR CONTROL OF NS

THE TREATY IGNITES THE FLAME LEADING TO THE ESTABLISHMENT OF BOTH BEDFORD & HAMMONDS PLAINS



ENGLISH CONTROL OF NOVA SCOTIA

LEADS TO
FOUNDING OF
HALIFAX



ENGLISH CONTROL OF NOVA SCOTIA

TO SAFE GUARD
INTERESTS A ROAD WAS
CONSTRUCTED
BETWEEN HALIFAX AND
MINAS BASIN LEADING
TO FORT SACKVILLE
BEING BUILT - 1749



THE BIRTH OF BEDFORD

ONCE ROAD WAS
COMPLETED, CROWN
GRANTS ARE GIVEN ALONG
ROAD – JOSEPH SCOTT
ACQUIRES TO SUPPORT HIS
SAW MILL. 12, 000 ACRES IN
1759 (FROM BEDFORD
BASIN TO GRAND LAKE)



THE BIRTH OF BEDFORD

FORT SACKVILLE SCOTT
MANOR HOUSE IS BUILT —
1768-72

JOSEPH SCOTT ESTATE
ENCOMPASSING MOST OF
BEDFORD REMAINS INTACT
UNTIL HIS DEATH IN 1806



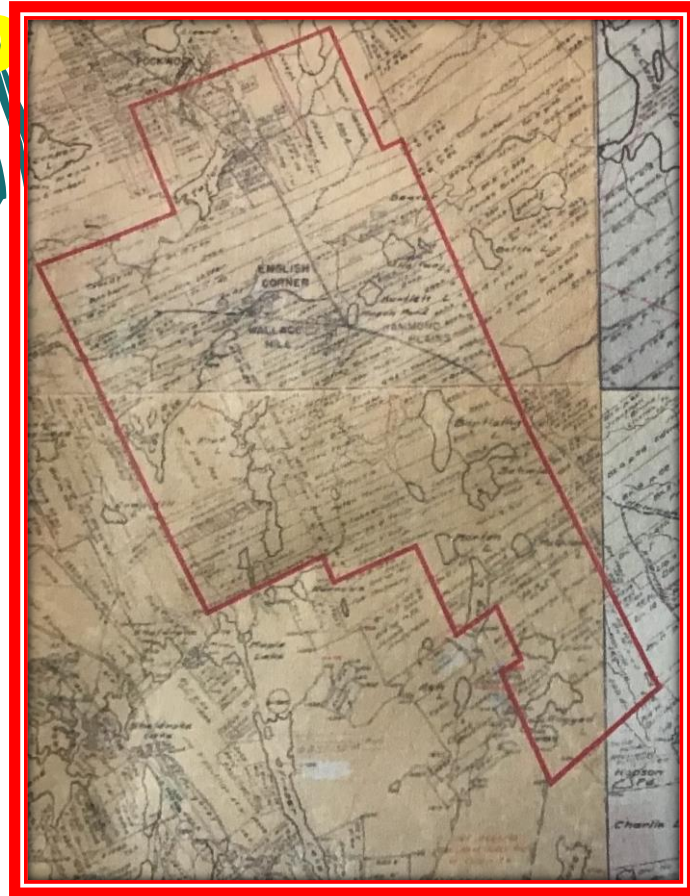
1800 - BEDFORD

BEDFORD AREA HAD
VERY FEW HOMES –
PRESENCE WAS
EITHER THE MILITARY
AT FORT SACKVILLE
OR BY THE SCOTT
FAMILY



HAMMONDS PLAINS GRANTS ISSUED - 1786

ORIGINAL HAMMONDS
PLAINS GRANT ISSUED
1786 – 42 LOTS + 3
LARGE LOTS AND
KINGS WOODS (1000
ACRES) (BIRCH COVE TO
ST. MARGARET'S BAY)



HAMMONDS PLAINS GRANTS ISSUED - 1786

ORIGINAL
HAMMONDS PLAINS
GRANT ISSUED 1786 –
INCLUDED A WATER
LOT ON BEDFORD
BASIN (TO BE USED AS
LANDING PLACE)



HAMMONDS PLAINS GRANTS ISSUED - 1786

A ROAD WAS
OPENED FROM
THE HAMMONDS
PLAINS GRANTS
TO BEDFORD
BASIN –1786 (RAN
ALONG NINE MILE
RIVER)



HAMMONDS PLAINS GRANTS ISSUED - 1786

GRANTS ISSUED
TO HALIFAX
BUSINESS FOLKS -
NON RESIDENTS
(USED THE LOTS
FOR THEIR
TIMBER)



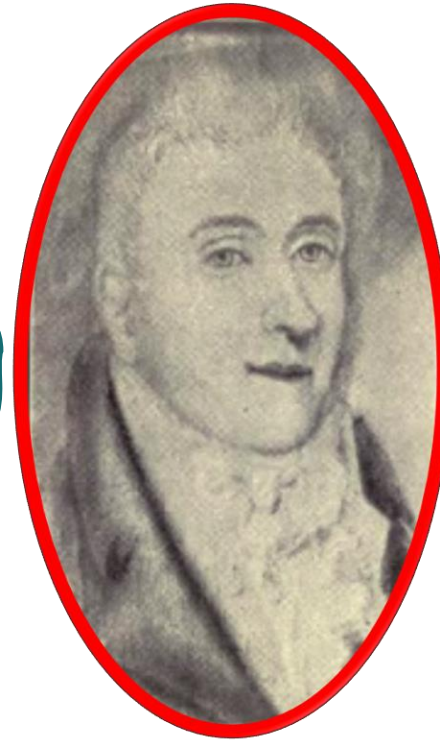
HAMMONDS PLAINS GRANTS ISSUED - 1786

LOTS HAULED TO
BEDFORD BASIN
(ALONG THE
ROAD OR
FLOATED DOWN
NINE MILE RIVER)



THE NINE MILE RIVER CONNECTION

A COMMERCIAL AREA DEVELOPED ON THE NINE MILE RIVER (PAPER MILL LAKE) IN EARLY 1800'S



Anthony Holland – Acadian Paper Mill - 1816

THE CURLEW STORY

THE CURLEW
(SLOOP) BUILT IN
HAMMONDS
PLAINS – 1820'S.
HAULED BY OXEN
TO BEDFORD
BASIN



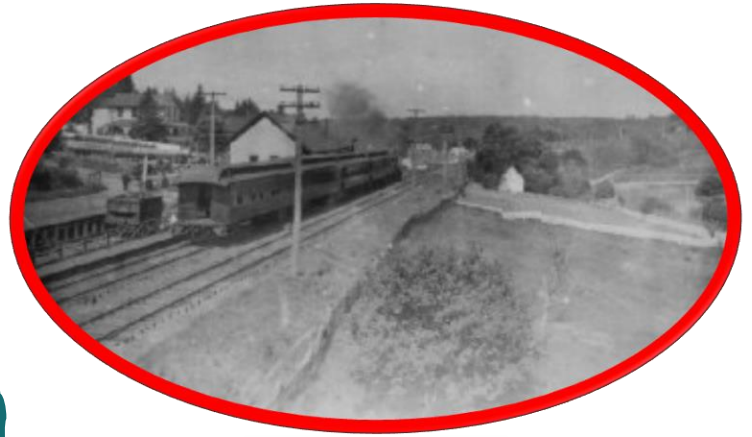
THE TRAIN COMETH

TRAIN TRACKS
ARE COMPLETED
FROM HALIFAX TO
BEDFORD – 1854.
TRAIN STATION
ERECTED.



BEDFORD BECOMES TRANSPORTATION HUB

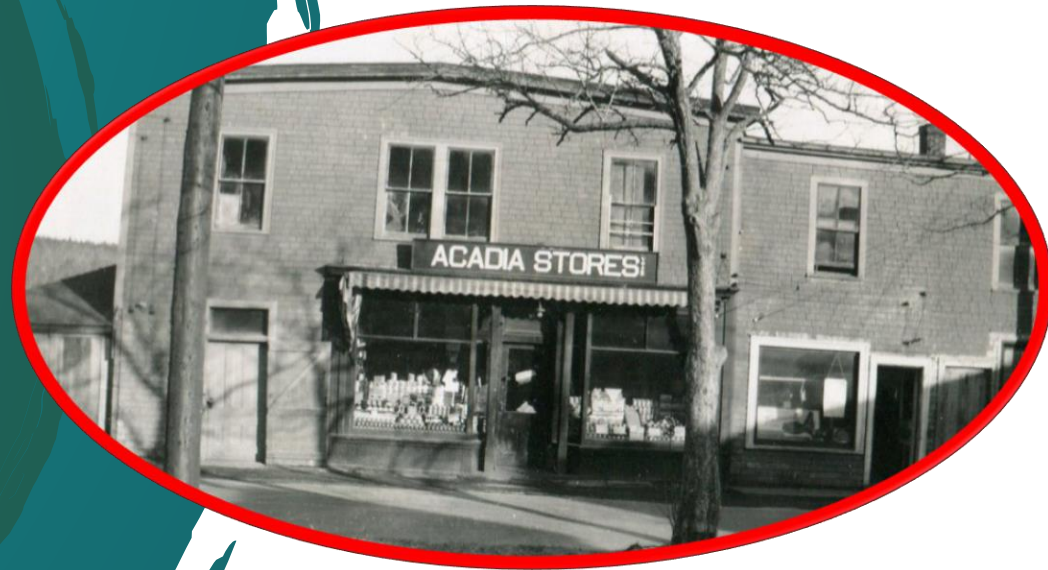
HAMMONDS
PLAINS RESIDENTS
USE THE TRAIN
STATION FOR
BOTH BUSINESS &
TRAVEL
PURPOSES.



LATER 1800'S - A PLACE TO BUY NECESSITIES

BEDFORD —

USED AS A
SERVICE DEPOT
(MAIL, DOCTOR,
TRAVEL) BY H P
FOLKS



THE CONNECTING ROAD BECOMES THE RELIABLE LINK



Hammonds Plains Road 1915



Bedford Highway 1910

POST OFFICE

Bedford serves as a
base for Post Office –
since 1854

MAIL DELIVERY DRIVER PLAYS
IMPORTANT ROLE



BANKING CENTER

BEDFORD – HAD A
BANK PRESENCE FOR
MUCH OF THE 1900'S



DOCTOR



SCHOOL



The Search for Higher Education at High School

STORES



Joudrey's Drug Store



Canfield's Store

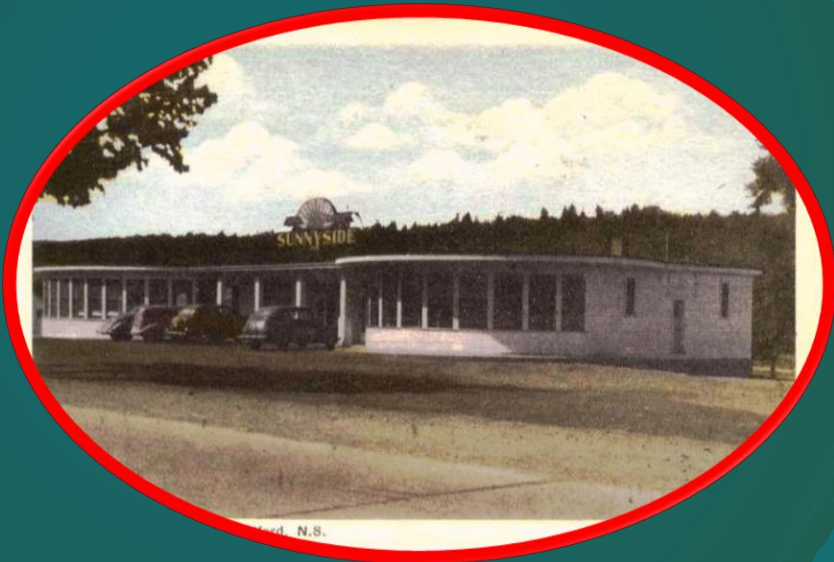


PENDER'S BUS

Connecting
Hammonds
Plains to
Bedford



SUNNYSIDE



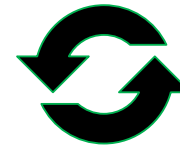
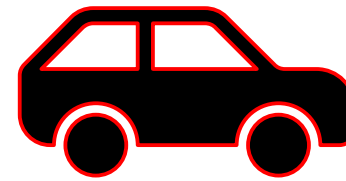
1945 MAGAZINE EXPLOSION

'We've Under Attack'

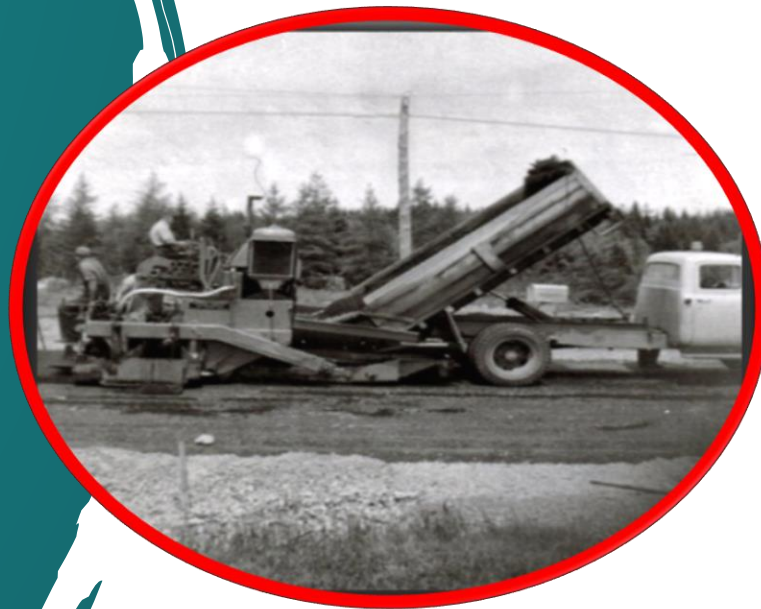
Heading to the
Plains



1957 - THE CONNECTION BECOMES CEMENTED



THE PAVING OF THE HAMMONDS PLAINS ROAD 1957-58



Leads to easier access

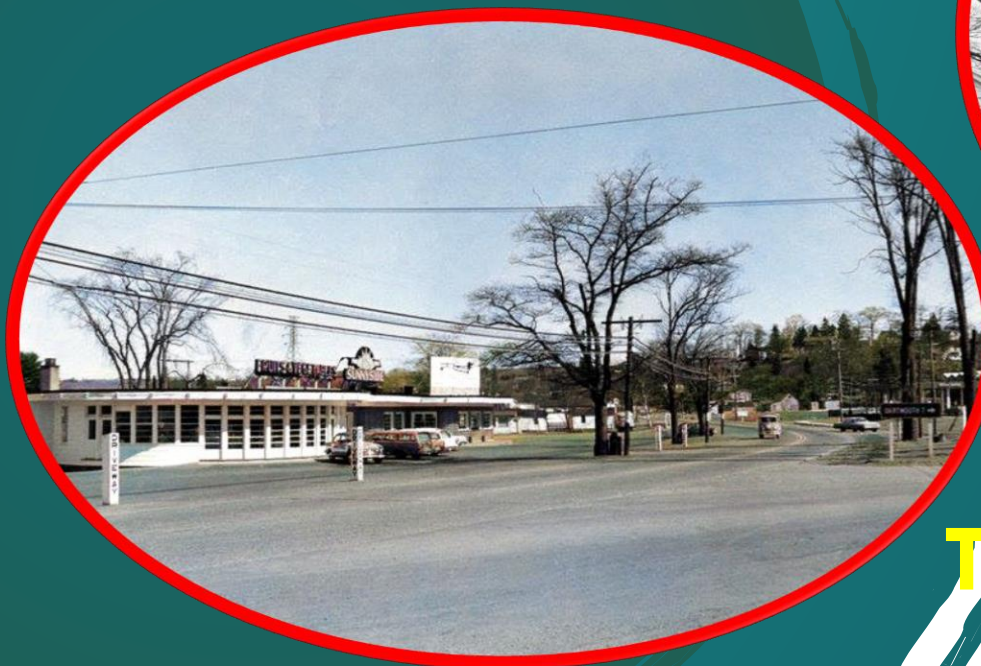
SHORT CUT TO ST. MARGARET'S BAY



AFTER 1960 BEDFORD BECOMES MAIN SERVICE CENTER TO HAMMONDS PLAINS RESIDENTS



FAST FOOD



The Lure of Sunnyside

THE MALLS



GROCERY



LIQUOR STORE



M
p
s
H
n

FIRE DEPARTMENT



Be
h
s
o
H

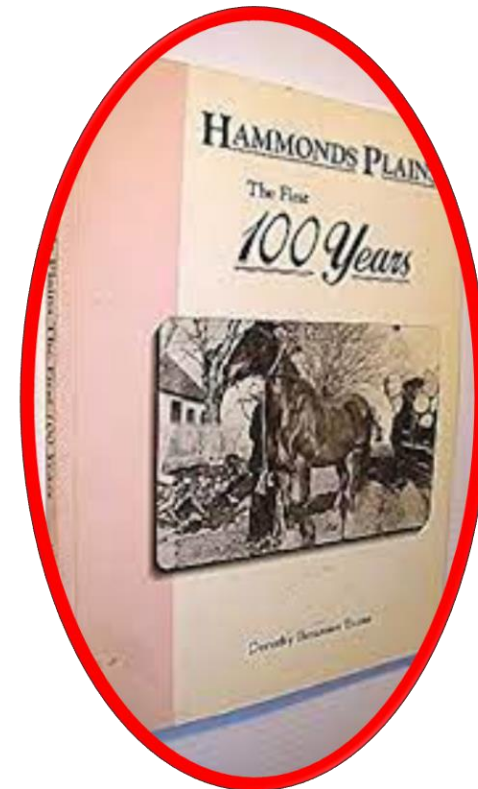
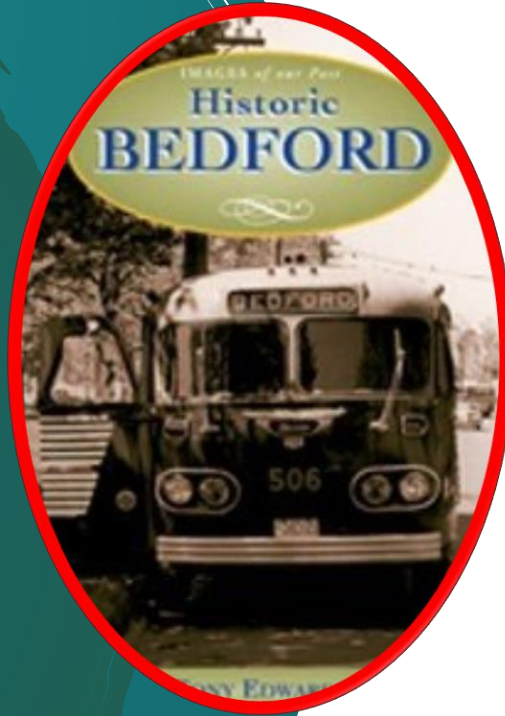
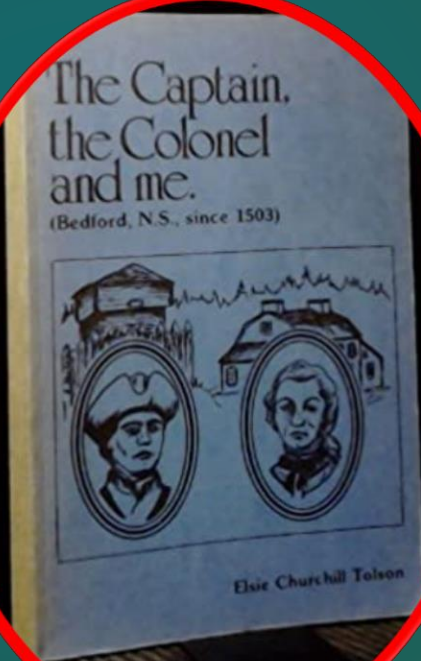
MINOR SPORTS



**BEDFORD & DISTRICT MINOR
HOCKEY ASSOCIATION** *EST 1973*

Hammonds Plains kids born
of Bedford Minor Sports
1970s

LIBRARY



1980 - Bedford Becomes a Town. Boundaries Established.

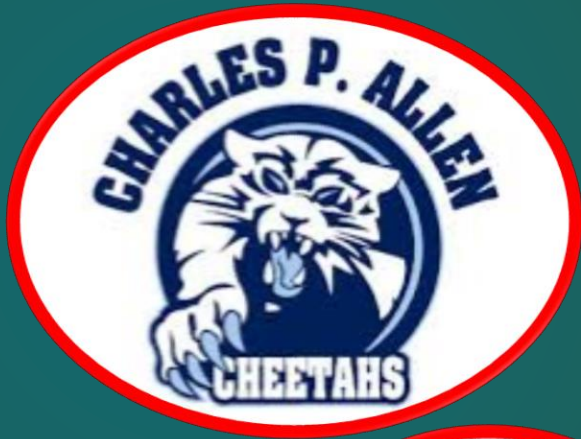


B
H

1990'S - HAMMONDS PLAINS BECOMES A PLACE TO PLAY



Recent Years



Truly Interconnected Communities

Similar Issues
Similar Values
Similar Needs



Today – Accommodating Neighbours



Are we two Communities Slowly Morphing Together?

BONDING WITH THE BASIN

November 28, 2022

**A PRESENTATION OF THE
HAMMONDS PLAINS
HISTORICAL SOCIETY**



Thanks for Participating

**HAMMONDS PLAINS
HISTORICAL SOCIETY**

**Our Home
Since 1786**



www.HammondsPlainsHistoricalSociety.ca